

WINDOWS



Luxury Aluminium Windows
and Rooflights Brochure 2025
signaturetradeframes.co.uk





Continuously investing to enhance value for our customers while delivering top-tier performance aluminium products to the UK market, Signature Trade Frames' range offers exceptional security, luxurious durability, and robust functionality as standard features. Ease of use is a fundamental aspect of the Signature product line, along with our dedication to innovative design and unique features. Constructed from marine-grade aluminium, our Signature range is meticulously designed and manufactured to provide enhanced corrosion resistance, ensuring a product that not only looks stunning right after installation but also maintains its luxurious finish and performance for years. With Signature's premium aluminium line, you can easily fabricate and install a complete house project – Making It Really Easy! Signature is rapidly becoming the go-to brand for luxury aluminium in the UK for several reasons, including: Our commitment to placing customers at the forefront of everything we create. Pas24 certified luxury aluminium throughout our Signature range.

Unmatched strength and durability. Signature products are lightweight, strong, and corrosion-resistant, capable of withstanding all weather conditions. Exceptional thermal efficiency. Secure and visually appealing. We have an extensive stock of standard colours across the UK and can accommodate all RAL colours upon request. Super Slim Sash options available. We provide arguably the best overall performance, featuring excellent security, durability, and functionality.

Reach out today to explore the exciting possibilities our Signature family can offer







SLIM LUXURY ALUMINIUM CASEMENT WINDOWS

The SIGNATURE Window boasts a super slim sash that reduces sightlines, enhancing your overall view. Certified to PAS24:2022 standards, it exceeds Part L requirements with a WER rating of A, achieving a newly built specification of 1.4 W/(m²k) when combined with highly energy-efficient glass. You can choose between a standard 81mm outer frame or the new 75mm outer frame, which integrates perfectly with our SIGNATURE Bifold door system and utilizes several shared components. This updated profile is particularly suitable for use as sidelights with openers alongside the bifold system. Moreover, it can be glazed from both the inside and outside, ensuring a simple and efficient installation process.

Why choose Aluminium?

Aluminium is exceptionally durable and more resilient than many other materials on the market today. With SIGNATURE marine-grade aluminium windows, you can benefit from decades of reliable performance, thanks to their outstanding resistance to environmental elements. This material is also remarkably strong, providing a high level of security and impact resistance.

Aluminium windows excel in insulation, thanks to innovative thermal break technology that efficiently minimizes cold transfer. Furthermore, they require very little maintenance to ensure optimal performance and a pristine appearance.



The SIGNATURE Window comes in both our standard and super slim sash options, providing minimal sightlines. We also offer flush options for improved aesthetics. With its sleek and modern design, the SIGNATURE Window beautifully pairs with our other SIGNATURE systems, offering a harmonious selection of products. Every configuration of the SIGNATURE Window system can be customised with various glazing options to match the style of any property.

- 28-44mm glazing options
- Heritage/ flush & standard window options
- 1.4 U-value
- Energy rating A (WER)
- Side hung / top hung / fixed light options available
- NEW 73mm aluminium profile option perfectly complements the Signature Bifold system



1.4
U-VALUE
/ WER A

ENERGY
RATED
A



SLIM SASH
FOR MINIMAL
SIGHTLINES

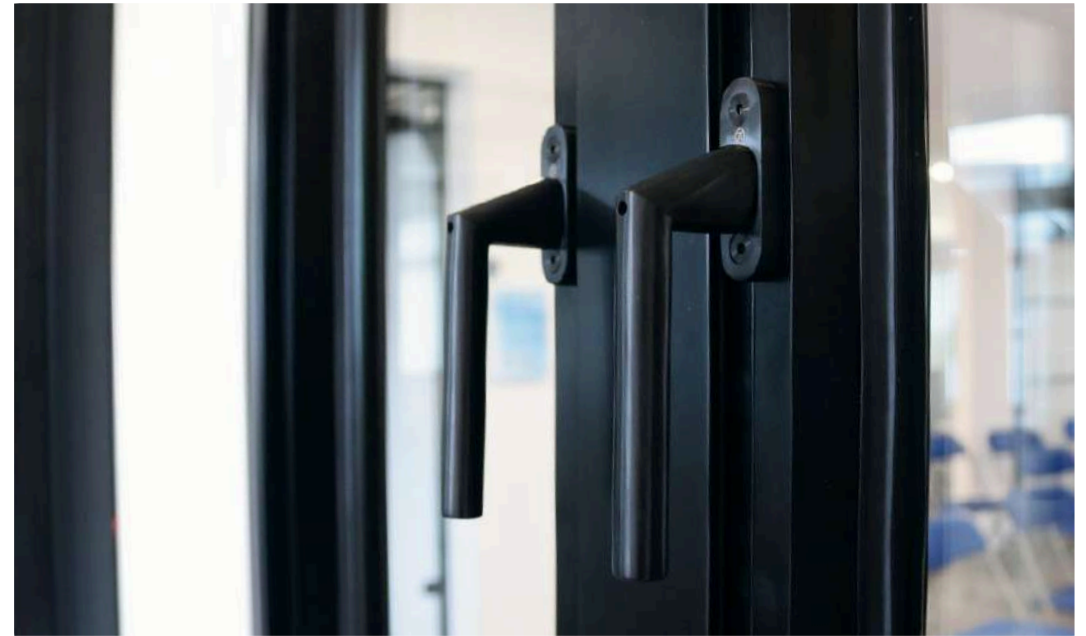


THE MULTI
POLYAMIDE
CHAMBER
ENHANCES U
VALUE

HARDWARE

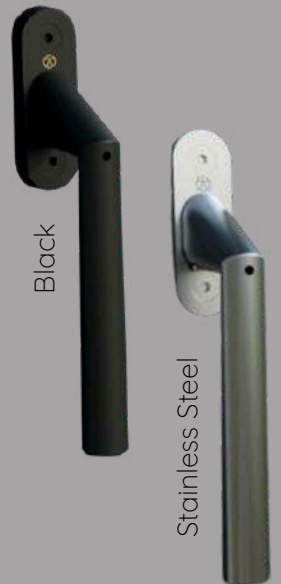
MILA HANDLES

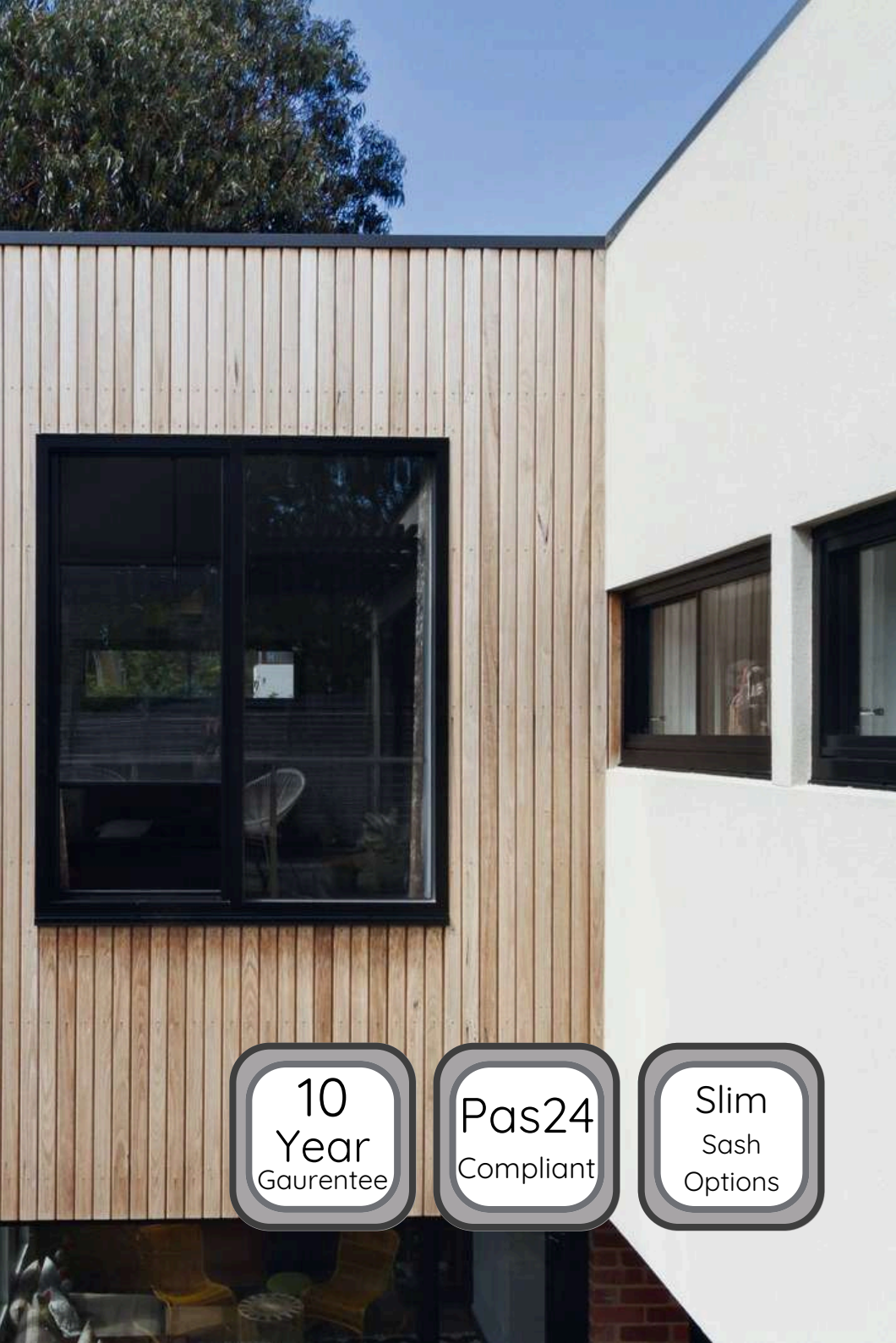
The Mila handle is offered in five coordinated finishes: Polished Gold, Polished Chrome, Smooth Satin Chrome, White, and Black. Designed for ease of use, it features a modern ergonomic lever that fits comfortably in your hand, along with a tear drop button for added comfort during operation. Equipped with a high-security locking system, these handles are incredibly reliable, having been tested for up to 50,000 cycles. Additionally, they come with a 10-year guarantee for your peace of mind.



COASTAL STAINLESS STEEL RANGE

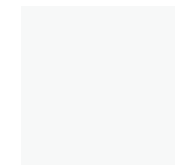
Coastal's high-quality window handles provide a sleek, contemporary aesthetic without compromising security. Their super slim design perfectly complements aluminium windows, and the lockable system is ideal for safety-conscious homeowners. Crafted from solid 316 Marine Grade Stainless Steel, they are also available in a PVD Satin Black finish.





Colours

Our windows come in three standard colours, along with two dual colour options. For projects that require custom-coloured doors, any RAL colour can be provided upon request.



White
RAL9016



Anthracite Grey
RAL7016



Black
RAL9005



Grey Out/
White In



Black Out/
White In



Bespoke RAL
colour

Universal Aluminium Cills

Our selection of universal aluminium cills with screw ports is compatible with most door and window systems, including our ACW81 window system. These cills efficiently redirect water away from brickwork while adding a stylish design element to the window's appearance. More durable than PVC alternatives, our aluminium cills include plastic push-in colour-matched end caps in our standard stock colours for a polished and secure finish. Cill sizes are available in 90mm, 150mm, 190mm, and 230mm. You can choose from Black, White, Anthracite Grey, textured mill finish, and dual colours of White/Anthracite Grey and Black/White, with the option to powder coat in any RAL colour.



THERMAL EFFICIENCY

The ACW81 system exceeds Part L compliance with a WER rating of A, and new built requirement of 1.4 W/(m²k) is achieved when combined with energy efficient glass.

WEATHER RESISTANCE

Excellent weather sealing is achieved using specially designed perimeter seals, with the option of weather piles for lower thresholds. Weather tightness tested to British standards.

LOW MAINTENANCE

Our low maintenance aluminium windows are strong, durable and highly corrosion resistant. Unlike timber, they don't need painting or staining to keep them weatherproof, and they won't rust or corrode. They will also never rot, peel or flake.

MAXIMUM VISION

The ACW81 Window is designed to collaborate all our aluminium products. The super slim sashes are a great option to complement the slim profile of our modern bifold and patio doors to make the most of your stunning views.



Discover
More >>

Point your smart
phone camera at the
QR code to explore
our web page





Elevate your surroundings with our exquisite windows, where timeless elegance meets unparalleled energy efficiency.

Signature Rooflights

Luxury marine-grade aluminium rooflights crafted to the highest standards; offering unmatched strength and durability, thermal efficiency, and safety, all while preserving Aluna's stunning modern aesthetic. SLEEK, STRONG, SECURE.

Rooflights are a wonderful enhancement for any room, flooding your home with natural light during the day and creating an elegant ambiance at night. They seamlessly blend traditional and contemporary designs, making them a perfect fit for a variety of home styles and architectures.



ELEVATE YOUR ELEGANCE:
ENRICH YOUR HOME WITH
EXQUISITE ROOFLIGHTS
THAT ILLUMINATE
IN STYLE!

For more information on our luxury
SIGNATURE Rooflight range
simply scan here:







SIGNATURE TRADE FRAMES
B E S P O K E W I N D O W S & D O O R S

Luxury Aluminum Windows & Rooflights Brochure 2025

Contact Us



01204 324236



sales@signaturetradeframes.co.uk



www.signaturetradeframes.co.uk



Signature Trade Frames,
Red Earth Farm, Plantation Rd,
Turton BL7 0DD